

CargoObserver-Track-Solar-XL -Track&Sense-Solar-XL



Monitor your assets with the power of the sun in real-time!



CargoObserver-Track-Solar-XL as well as (Track &Sense) is a tracking system specially optimized for rail cars, containers and trailers, as well as when high rate of data transmission is required. Easy mountable on roof-side locations for permanent installations it is maintenance free operation for up to 12 years. The advantage compared to a device with primary battery or even our smaller solar variant is a significantly higher message update rate.



The behavior of the CargoObserver-Track&Sense(&Solar)-XL unit can be fully parameterized remotely in order to meet the unique customer requirements even as they change over time. The optional connection of wireless sensors expands the application spectrum by monitoring the interior space. Developed for the harsh industrial and automotive environment, the very energy efficient solution is the result of research and development with University and Industrial partners. Well known international enterprises trust on the reliability and long life cycle of our solution.

Key Product Features

- Precise localization with high sensitive GNSS receiver
- Configurable Move and Stop reports
- High update-rate, real-time mode
- Device based geofencing alarms
- Route Monitoring
- Unmount detection
- Additional optional wireless sensors

Advantages

Unsurpassed long battery life

- 12 years maintenance free, report frequency only limited by long term radiation.
- Very long life Military/Aerospace battery with wide temperature range

Full cost control

- Operating modes adjustable via web
- Lowest total cost of ownership
- All-Inclusive data service with fixed monthly rates and no hidden costs

Flexible and quick to deploy mounting

- Roof side mounting, invisible from below
- Installed in seconds with magnets or tape
- Alternative theft protective screw mounting

CargoObserver-Track(&Sense)-Solar-XL is the solution for energy self-sufficient monitoring of assets at high transmission rates

CargoObserver-Track-Solar-XL -Track&Sense-Solar-XL



Technical Specification

Physical

Dimensions	318x82x32 mm
Weight	595g
Mounting Options	Screw- or Magnet mount

Environmental Conditions

Operating Temperature	-40°C to +85°C
-----------------------	----------------

Communication

GSM	Quadband
Communication	GPRS with SMS Fallback
4G Mobile Network	4G NB-IoT /Cat-M1
Wireless Sensor Interface	Bluetooth Low Energy 5.0 & ITSS 2 Standard

Sensors

GPS / GNSS	GPS, optional Glonass, Galileo
3-Axis Acceleration	+/- 16g
Tamper detection	detects unmount of device
Support for wireless sensor	Temperature, Humidity, Door

Power Supply and Lifetime

Battery	Aerospace Lithium-Ion Cells
Energy autonomy (no charging)	Typically 4 Month
Battery Lifetime	12 Years at 30% DoD daily

Standards

EN61000-6-2, EN61000-6-4, ETSI EN301 489-1, EN301 489-7, EN50121-3-2:2015, EN61373, EN50155

Customers Benefits

Faster locating of assets and real-time overview of assets location and distribution among sites.

Better control of intermodal transports, allows more timely handover at rail to road connection points.

Optimized Supply Chain Management improves long term passage of goods.

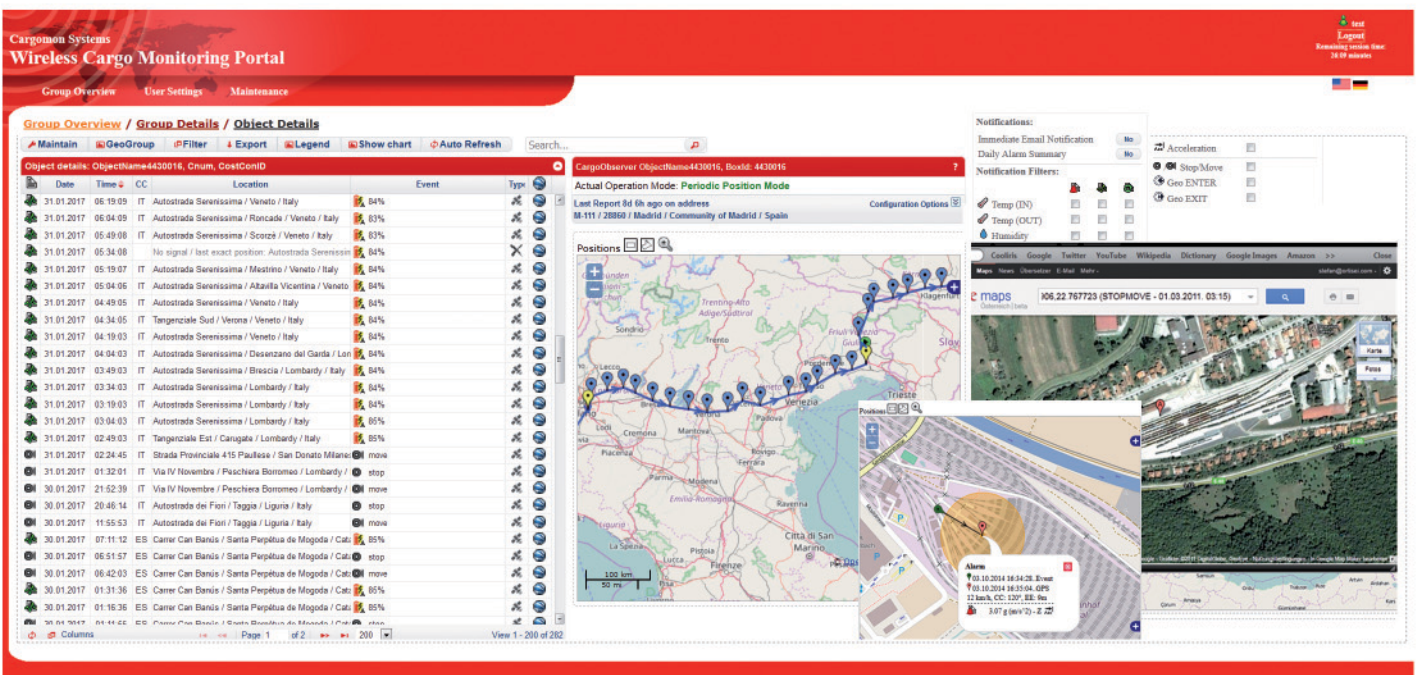
Higher utilisation of assets and hence reduction of total assets and lower cycle time.

Possibility to offer **location information** to your customers.

Higher security by monitoring geofencing areas and transport routes.

Flexible Integration into Existing IT:

The All-In-One Data Service from CargoMon delivers customized asset data directly to your existing IT System without added cost.



CargoMon Systems GmbH

eMail: office@cargomon.com - Web: www.cargomon.com

Tel: +43 (1) 236 53 10 - Fax: +43 (1) 236 53 10 99